

T8 SERIES

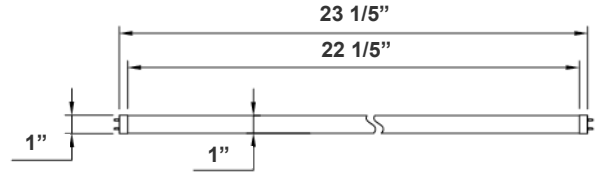
COMMERCIAL INDOOR LIGHTING

WESTGATE
THE FUTURE IS HERE...AND IT'S QUITE BRIGHT!

T8-EZ6-GS-2FT-10W-30K-C
T8-EZ6-GS-2FT-10W-35K-C
T8-EZ6-GS-2FT-10W-40K-C
T8-EZ6-GS-2FT-10W-50K-C



Customer Name: _____
Project Name: _____
Note: _____ | Type: _____



23 1/5"(L) X 1" (D)

Crystal Glass T8 Tube switches from fluorescent tubes to LED, giving more cost efficiency by providing the same amount of lumen output with less energy consumption. Type B single end and Type A+B are designed for different retrofit projects. 350° beam angle glass The LED tube offers a soft and bright light distribution. Stable quality out of mass automated production.

Features

- Type A + B (Dual UL)
- Type A: With Existing Ballast - UL No. E366061
- Type B: Ballast Override (AC Direct), Connect One End or Both Ends (Dual Function) - UL No. E342884
- 5-Year Warranty
- Glass Lens

Technical Specifications

Electrical:

- Voltage: 120-277V; 50/60Hz AC
- Power Factor: >0.90
- THD: <20%
- Wattage: 10W
- Efficacy: 120 LPW

Lighting:

- Dimming: Non Dimmable
- Total Lumens: 1200LM
- Color Temperatures: 3000K/3500K/4000K/5000K
- Color Rendering Index: CRI ≥ 80
- Beam Angle: 120°
- Rated life: 50,000 Hrs

Mechanical:

- Base Type: G13
- Glass tube: Better Transparency and Thermal Conductivity than Plastic
- Clear Glass
- Ambient Operating Temperature: -13°F to 113°F
- IP Rating: IP20 (Indoor)

Applications:

- Direct Fit 4 T8 LED tubes do not burn out easily and provide bright and even lighting to schools, office spaces, retail stores and storage rooms.

Other Models:

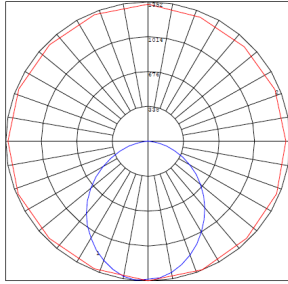
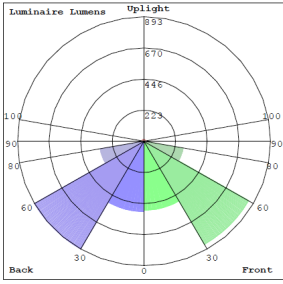
- 10W | 1200LM | T8-EZ6-GS-2FT-10W-30K-F
- 10W | 1200LM | T8-EZ6-GS-2FT-10W-35K-F
- 10W | 1200LM | T8-EZ6-GS-2FT-10W-40K-F
- 10W | 1200LM | T8-EZ6-GS-2FT-10W-50K-F



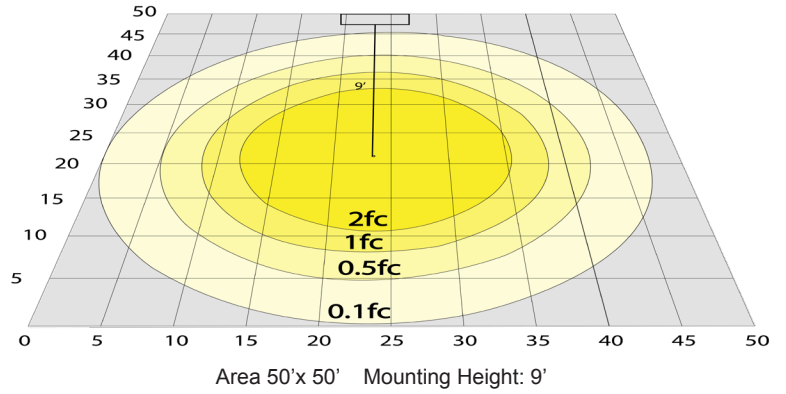
Phone: (877) 805-2252 | Fax: (877) 805-2252
www.westgatemfg.com | www.westgatecontrols.co



Photometrics: T8-EZ6-GS-2FT-10W



BUG Rating: B2-U2-G1



Other Views:



Close-up View



Front View



Socket View

Performance Table: T8-EZ6-GS-2FT-10W

MODEL NO.	Wattage	Voltage	Lumens	Color Temp.	BUG Rating	LPW
T8-EZ6-GS-2FT-10W-30K-C	10W	120-277V	1200LM	3000K	B2-U2-G1	120
T8-EZ6-GS-2FT-10W-35K-C	10W	120-277V	1200LM	3500K	B2-U2-G1	120
T8-EZ6-GS-2FT-10W-40K-C	10W	120-277V	1200LM	4000K	B2-U2-G1	120
T8-EZ6-GS-2FT-10W-50K-C	10W	120-277V	1200LM	5000K	B2-U2-G1	120

Sample Ordering

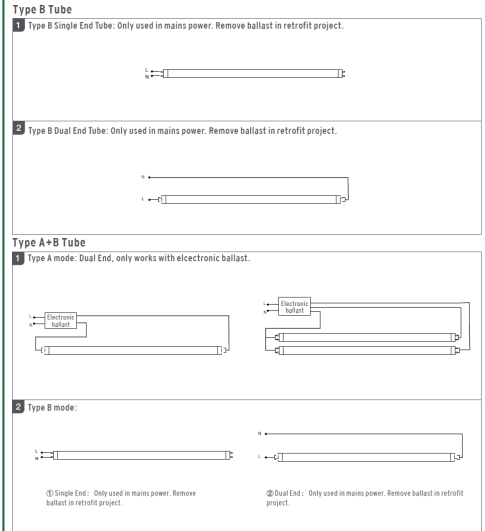
Model **Material** **Size** **Watt** **Color Temp.** **Lens Type**
 T8 - EZ6 - GS - 2FT - 10W - - C
 30K = 3000K
 35K = 3500K
 40K = 4000K
 50K = 5000K

Example:

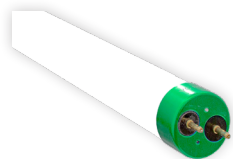
1. T8-EZ6-GS-2FT-10W-30K-C

(FOR 10W 3000K T8 2FT TUBE LAMP 120-277V)

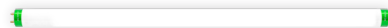
WIRING DIAGRAM:



Other Models: T8-EZ6-GS-2FT-10W-F (Frosted Model)



Close-up View



Front View



Socket View